

SLMail Pro

Workaround - How to correct the SL Migration Error during Installation

Version 6.3

SLMail Pro Version 6.3
Workaround – Correct SL Migration error
January 2006

Published by:

SeattleLab
www.seattlelab.com

© 2006 SeattleLab. All Rights Reserved.

Information in this document is subject to change without notice. No part of this document may be reproduced or transmitted in any form or by any means, electronic or mechanical, for any purpose, without the express written permission of SeattleLab.

SLMail®, SLMail Pro®, SeattleLab®, SLWebMail™, and SL Report Center™ are trademarks of SeattleLab. Other brands or products are the trademarks or registered trademarks of their respective holders and should be treated as such.

Any errors, corrections, suggestions, or omissions should be sent to documentation@seattlelab.com.

SLMP-6.3 INS-000-ER1-IN1

SLMail Migration Error – additional installation steps

If you received an SLMail Migration error during the installation process, please follow these additional installation steps to correctly complete the SLMail Pro installation.

1. Check in your Active Directory users for a user account named **SLMailPro_Admin**.

NO - it is not there.

Then you must create the **SLMailPro_Admin** user account.

Give it a password of **Orpl i aml S**

(it is Smailpr0 backwards...) *First character is a zero, the last is an uppercase S.*

Make it a member of the Built-in Group Administrators.

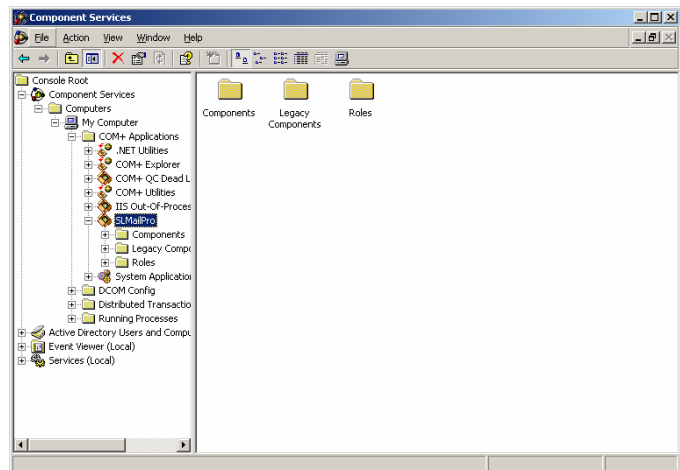
Continue with step 2.

Yes – it is there.

Continue with step 2.

2. Go to **Windows Administrative Tools\ Component Objects.**

Open **Console Root\Component Services\ Computers\My Computer\ COM+ Applications\SLMailPro.**



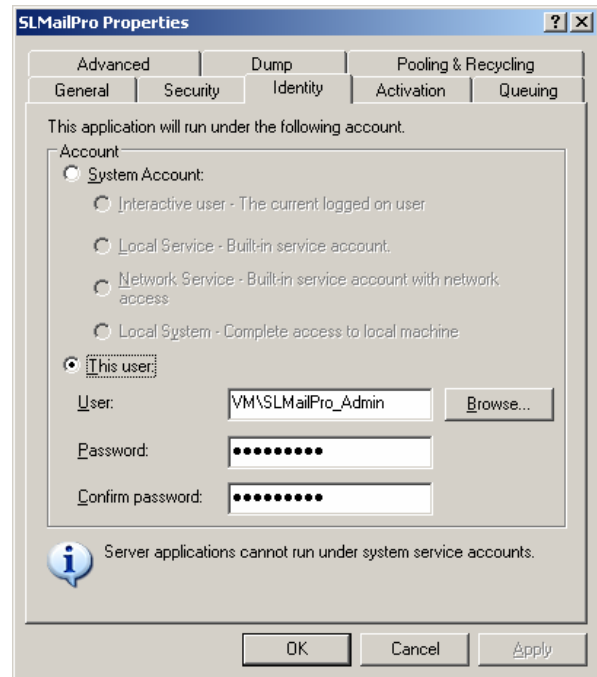
3. Right click on **SLMailPro** and choose **Properties**.

Select the **Identity** tab.

Choose **This User**.

Browse to the **SLMailPro_Admin** user and select it, then enter the password twice.

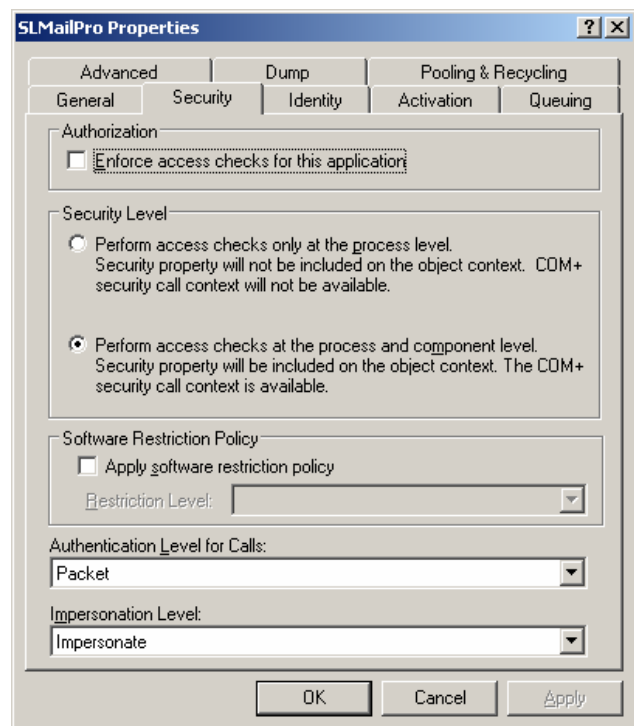
Click **Apply**.



4. Select the **Security** tab.

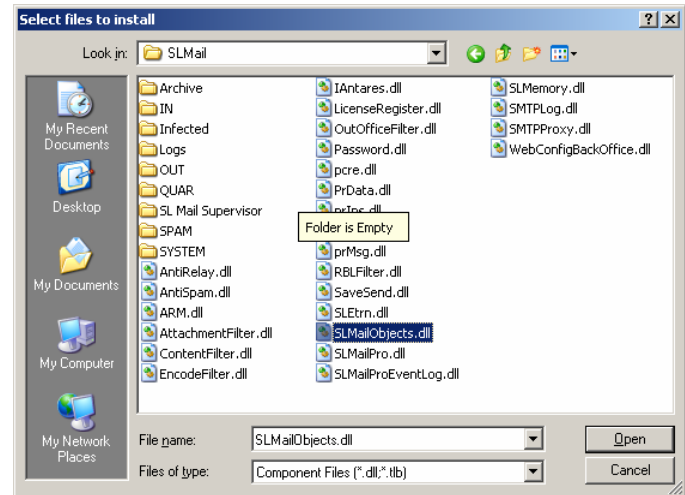
Make sure all settings match this example.

Click **OK**.



- Browse to your **SLMail** folder and choose **SLMailObjects.dll**.

Click **Open**.



- Wait until the Install new components display completes its fill in of Components found.

Click **Next**.

Click **Finish**.

Reboot the SLMail Pro server. The SLMail Pro administration should be fully functional.

